

# CAR WASH PORTFOLIO

**SONAX**<sup>®</sup>  
MADE IN GERMANY

## ***INNOVATIVE SOLUTIONS FOR YOUR CAR WASH BUSINESS***

- ✓ High-performance products for rollover, conveyor and self-service car washes
- ✓ Premium coatings providing long-lasting surface protection and extreme deep shine
- ✓ Smart marketing concepts to increase customer frequency and average wash prices

**CONTENTS**

3 - 5	CAR WASH WITH BRAND POWER
6 - 7	WHEEL RIM CLEANING
8 - 11	PRE-WASH
12 - 15	AUTOMATIC PRE-WASH
16 - 17	MAIN WASH
18 - 19	DRYING
20 - 21	PRESERVATION
22 - 23	SPECIAL COATING
24 - 25	WATER TREATMENT
26 - 27	HALL AND FACILITY CLEANING
28 - 29	ACCESSORIES
30 - 31	PROMOTIONAL MATERIAL



**THAT'S WHAT WE STAND FOR:  
CAR WASH WITH BRAND POWER**

Superior raw materials, high-quality formulas, efficient product performance, innovation focussing on sustainable solutions — that's our standard.

The broad product range meets the highest demands and comprises products for perfect washing results, from manual pre-cleaning to long-term preservation.

A clever brand concept ensures differentiation from the competition.



## SUSTAINABILITY

SONAX is a family company with deep roots in its region, and has been characterised since the very beginning by a sense of responsibility towards society and the environment. Our long-standing headquarters in Neuburg on the Danube underscores the quality pledge, "Made in Germany", allows short transport routes to our domestic and European sales markets and creates jobs in the region. As a specialist in retaining the value of vehicle surfaces, we help our customers extend the useful lifespan of their vehicles. As we innovate, we search continuously for sustainable solutions to further develop our products. In this, we work closely together with our partners along the entire value chain in reducing our ecological footprint, thus making a positive contribution towards social progress.

## PRODUCT PROMISE

- ✓ Active contribution to resource and climate protection thanks to effective, highly concentrated products that are extremely economical
- ✓ Preferential use of renewable raw materials
- ✓ No use of substances that are harmful to health and the environment, such as NTA (nitrilotriacetic acid), hydrofluoric acid (HF), mineral oils, etc.
- ✓ All surfactants are easily biodegradable according to OECD criteria
- ✓ Full separation capability of the light liquid separator (according to EN 858 and DIN 1999, respectively) when the recommended application concentrations are adhered to



## KNOW-HOW-TRANSFER

Our customers' satisfaction is particularly important to us. For your car wash facility to achieve the best possible results, you can rely on us for comprehensive advice on system equipment, system settings, programme design and water recycling. We identify opportunities for savings, offer ways for generating reasonable extra business and support you in expanding your clientele and increasing the average wash prices as part of the wash potential analysis.

### In short:

We reduce your operating costs, optimise the car wash result, and increase your turnover.



### CONTACT US!

Safety data sheets and operating instructions are available at [www.sonax.com](http://www.sonax.com)

# WHEEL RIM CLEANING

**SONAX®**  
MADE IN GERMANY

EFFECTIVE

GENTLE

BRILLIANT

Since rims are an eye-catcher on many vehicles and must match the overall clean look, brilliantly maintained rims are indispensable for a perfect wash result. Stubborn dirt, such as brake dust and road grime, is removed gently but effectively during rim cleaning, without affecting safety-relevant components.

Please note: All products shown here are VDA compliant.



## 623 Wheel Foam AF

» The foamy one «

Acid-free special cleaner for wheel rim foam systems. Intense and gentle cleaning thanks to its long durability.

- Alkaline and heavily foaming
- Cleans steel and light-alloy rims
- Removes even the most stubborn stains
- NTA and phosphate-free; fast releasing and easy to separate

Art.No. 06235000	5 l
Art.No. 06236000	10 l
Art.No. 06237050	25 l



## 651 Rim Cleaner acidic concentrate

» The acidic one «

Highly effective acidic cleaner for the rapid and efficient removal of stubborn soiling. Also removes yellow staining due to winter use from steel and aluminium rims and wheel caps.

- Compatible with plastics
- Odourless
- WITHOUT hydrofluoric acid (HF)

Art.No. 06516000	10 l
Art.No. 06517050	25 l
Art.No. 06519000	200 l



## 230 Rim Cleaner acid-free

» The one with activity indicator «

Acid and caustic-free power cleaner. Dissolves all typical rim stains. The formula with innovative activity indicator does not attack rim surfaces or wheel bolts.

- For all special, light-alloy and steel rims
- Can also be used on chrome-plated and polished rims
- Suitable for wheels with tyre-pressure monitoring system (TPMS)

Art.No. 02305000	5 l
Art.No. 02307050	25 l
Art.No. 02309050	200 l



## 670 PreCircle – EVOLUTION –

» The one for express facilities «

Highly alkaline rim cleaner for express conveyor car washes. Reliably removes typical dirt from rims and wheel caps.

- Stabilises the pH value in the pre-wash cycle
- Improves the dirt dissolving effect of the circuit water
- WITHOUT NTA chelating agents

Art.No. 06707050	25 l
Art.No. 06708000	60 l



ACCESSORIES: CLEANING BRUSH / DOSING UNIT / LOW-PRESSURE SPRAYER / PRESSURE SPRAYER



# PRE-WASH

**SONAX®**  
MADE IN GERMANY

INTENSIVE

FAST

THOROUGH

Stubborn dirt on the paintwork is removed manually before the washing process. Dried bird droppings, insects and street dirt are dissolved so that the system can easily remove them. This step can also be used to specifically treat problem areas that arise due to the vehicle contour or defective paint conditions. SONAX products considerably improve the wash result without attacking the surfaces.

Please note: All products shown here are VDA compliant.



## 605 Dirt Dissolver

» Low foaming and effective «

Alkaline, low-foaming cleaner concentrate for removing insect, oil, and grease stains. Also removes static dirt. Acts quickly and thoroughly.

- Also suitable for cleaning caravans
- NTA and phosphate-free
- With softener for even better cleaning results

Art.No. 06057050	25 l
Art.No. 06058000	60 l
Art.No. 06059000	200 l



## 626 Intensive Cleaner

» The universal one «

Intensive pre-cleaner with high dirt-removing power on rims and paintwork. Ideal for foam lances. Dissolves effectively and powerfully.

- Removes brake dust from wheel rims
- Dissolves insects and static dirt
- Removes oil, grease & soot contamination
- WITHOUT NTA chelating agents

Art.No. 06267050	25 l
Art.No. 06268000	60 l
Art.No. 06269000	200 l



## 624 Insect Remover

» The insect specialist «

Slightly foaming, alkaline power cleaner for the pre-wash. Quickly, reliably yet gently dissolves insects and typical street dirt.

- Also suitable for foam lances
- With fresh, floral scent
- WITHOUT NTA chelating agents

Art.No. 06246000	10 l
Art.No. 06247050	25 l
Art.No. 06248000	60 l



## 627 MultiStar

» Mild cleaning with scent «

All-purpose phosphate-based pre-cleaner. Microactive surfactant combinations ensure maximum dissolving power for grease, oil, and protein.

- Ideal for the use in biological water recycling systems
- Also suitable for the car's interior
- WITHOUT NTA chelating agents

Art.No. 06275000	5 l
Art.No. 06276000	10 l
Art.No. 06277050	25 l
Art.No. 06278000	60 l
Art.No. 06279000	200 l



ACCESSORIES: CLEANING BRUSH / DOSATRON / DOSING UNIT / LOW-PRESSURE SPRAYER / PRESSURE SPRAYER





## 660 PowerClean

» Multifunctional all-rounder «

Alkaline power cleaner for use as insect remover or pre-cleaner. Can also be used as an alkaline rim cleaner in the low-pressure process.

- Strongly alkaline, highly effective, powerful
- NTA and phosphate-free; fast releasing and easy to separate
- Also suitable for cleaning wash brushes

Art.No. 06606000 10 l

Art.No. 06607050 25 l

Art.No. 06608000 60 l



## 676 CleanStar – EVOLUTION –

» Powerful foam cleaner for express «

Strongly alkaline, highly foaming pre-cleaner with maximum cleaning power for insects. With mild scent for a pleasant atmosphere in the pre-wash area. Extremely economical due to the high product concentration.

- Can also be used for power foam lances and pre-wash foam walls
- Also easily removes brake dust from wheel rims
- WITHOUT NTA chelating agents, anions and phosphate

Art.No. 06767050 25 l

Art.No. 06768000 60 l

Art.No. 06769000 200 l



## 678 PreStar – EVOLUTION –

» Low foaming for pre-wash cycles «

Low-foaming, highly alkaline insect remover for thorough pre-cleaning in conveyor car washes. The special formula is ideal for pre-wash cycles. Quickly yet gently dissolves insects and typical street dirt.

- Relieves pre-wash and service water circuits
- Reliably cleans paintwork and rims
- WITHOUT NTA chelating agents, anions and phosphate

Art.No. 06787050 25 l

Art.No. 06788000 60 l

Art.No. 06789000 200 l



# AUTOMATIC PRE-WASH

**SONAX®**  
MADE IN GERMANY

EFFECTIVE

GENTLE ON THE PAINT

PLEASANT SCENT

In the first step of the automated cleaning process, foam pre-cleaners are used to gently soften and dissolve heavy soiling. The active foam remains stable on the surface for a long time and can thus act even more intensively, allowing the soiling to be removed in the following programme step by high pressure or brushing. In no time at all, dust particles are dissolved.

Please note: All products shown here are VDA compliant.



## 618 Foam Energy

» With Energy «

Stable fragrance foam with very high active foam power. Produces an impressive foam carpet on the vehicle even at the lowest dosage.

- Very gentle on paintwork due to its neutral pH value
- Phosphate-free
- With pleasant scent

Art.No. 06185000	5 l
Art.No. 06186000	10 l
Art.No. 06187050	25 l
Art.No. 06188000	60 l



## 631 Power Foam Energy

» The specialist with power «

Active foam for self-service car washes with power foam insect booster. Ideal for power foam and combi lances. The energising scent delights car wash customers; the extremely economical consumption relieves the burden on waste water.

- Reduces the contamination of foam generators in combi lances
- Sulphate and phosphate-free, non-ionic and amphoteric
- With energising and powerful scent

Art.No. 06318000	60 l
------------------	------



## 628 Foam Spring Blossom

» With extra fresh fabric softener fragrance «

Stable fragrance foam with very high active foam power. Produces an impressive foam carpet on the vehicle even at the lowest dosage.

- Very gentle on paintwork due to its neutral pH value
- Phosphate-free
- With pleasant scent

Art.No. 06285000	5 l
Art.No. 06286000	10 l
Art.No. 06287050	25 l



## 648 Foam Berry

» With berry scent «

Stable fragrance foam with very high active foam power. Produces an impressive foam carpet on the vehicle even at the lowest dosage.

- Very gentle on paintwork due to its neutral pH value
- Phosphate-free
- With pleasant scent

Art.No. 06485000	5 l
Art.No. 06486000	10 l
Art.No. 06487050	25 l
Art.No. 06488000	60 l





## 661

### Foam+ SYMBIOTIK

» The problem solver «

Strong dirt-dissolving, slightly alkaline active foam cleaner. Dissolves insects and produces an ideal foam pattern. Is gentle on the surfaces to be cleaned and ensures good service water quality even with high wash volumes.

- Sulphate-free to minimise putrid scents
- Non-ionic and amphoteric
- Phosphate-free

For acutely contaminated water and bad odours, shock treat with Active Depot Booster (666). Further information on page 25.

Art.No. 06615000 5 l

Art.No. 06616000 10 l

Art.No. 06617050 25 l



Art.No. 06715000 5 l

Art.No. 06716000 10 l

Art.No. 06717050 25 l

Art.No. 06718000 60 l



## 691

### Foam X

» The one for the highest demands «

Powerful dirt-dissolving, alkaline, active foam cleaner for the automatic wash in rollover and conveyor car washes. Can also be used as foam shampoo and in the insect pre-sprayer.

- Fewer residues even in combined operation
- Sulphate-free, non-ionic and amphoteric
- With energising fresh fragrance

Art.No. 06915000 5 l

Art.No. 06916000 10 l

Art.No. 06917050 25 l





# MAIN WASH



**SONAX®**  
MADE IN GERMANY

SUPPORTIVE

THOROUGH

EFFECTIVE

SONAX offers precisely formulated products for textile, foam and plastic brushes that are gentle on the material. Top-quality care substances make the brushes glide optimally. At the same time, they prevent the brushes from re-soiling. SONAX brush shampoos also demonstrate best performance in facilities with service water systems.

Please note: All products shown here are VDA compliant.



## 600

### Shampoo

» The gentle one «

Concentrated brush shampoo with increased foaming and high cleaning power. Protects the washing material, be it foam, textile or other.

- With softener for even more cleaning power
- Non-ionic and amphoteric
- Phosphate-free

Art.No.	06005000	5 l
Art.No.	06006000	10 l
Art.No.	06007050	25 l
Art.No.	06008000	60 l

pH 11,5



## 672

### AcidStar

» The acidic one «

Acidic brush shampoo for cleaning and preserving brush materials. Neutralises in express facilities, improves drying and dissolves iron in service water.

- Also suitable for gentle maintenance cleaning
- Reduces the calcification of the washing material
- WITHOUT NTA, phosphoric acid, hydrochloric acid and hydrofluoric

Art.No.	06725000	5 l
Art.No.	06726000	10 l
Art.No.	06727050	25 l

pH 1



## 613

### Wash + Dry – EVOLUTION –

» The supporting one «

Mild special shampoo with active ingredients that support drying. Especially for systems with short throughput times and drying zones. Special care substances produce a unique gloss.

- Can also be used as a foam polish
- Phosphate-free, non-ionic, amphoteric
- Supports the drying process

Art.No.	06135000	5 l
Art.No.	06137050	25 l
Art.No.	06139000	200 l

pH 5



## 662

### Shampoo+

» The powerful one «

Slightly alkaline, sulphate-free brush shampoo. Very good wetting capacity for excellent dirt removal. Highly concentrated and very efficient. Improves the service water quality.

- Can also be used as a mild pre-cleaner
- Prevents putrid scents in the process water system
- Non-ionic and phosphate-free

Art.No.	06625000	5 l
Art.No.	06626000	10 l
Art.No.	06627050	25 l
Art.No.	06628000	60 l
Art.No.	06629000	200 l

pH 11



## FOR SELF-SERVICE CAR WASH STATIONS

## 525

### Cleaning Powder

» The powder «

Powerful, fast-dissolving cleaning powder for self-service dosing units. Removes heavy soiling of any kind without leaving residues or grey films. With intensive fruity cherry fragrance.

- Highly effective and powerful
- Particularly fast dissolving
- WITHOUT NTA chelating agents

Art.No.	05257050	20 kg
---------	----------	-------

pH 12



Suitable for self-service

# DRYING



**SONAX®**  
MADE IN GERMANY

DRYING  
REACTIVE  
SHINY

A dry paint surface with deep shine: this is how car wash customers want to see their vehicles. The SONAX washing process achieves this result thanks to products that are perfectly coordinated in the individual phases and especially in the drying process. Even facilities with circulation systems that use industrial water yield a brilliant result.

Please note: All products shown here are VDA compliant.



## 602 Dry S

» For soft water «

Gloss drying aid especially suitable for soft water. Produces a stain-free result on paintwork and glass, even in facilities with a short drying zone.

- Preserves and produces an impressive deep shine
- WITHOUT hydrocarbon and silicone

Art.No. 06025000	5 l	
Art.No. 06026000	10 l	
Art.No. 06027050	25 l	
Art.No. 06028000	60 l	




## 603 Dry H

» For hard water «

Drying aid specially developed for use in the higher water hardness range. Ensures that the water droplets run off without leaving any residue on all paintwork and glass surfaces.

- Effective in both cold and warm temperatures
- WITHOUT hydrocarbon and silicone

Art.No. 06035000	5 l	
Art.No. 06036000	10 l	
Art.No. 06037050	25 l	
Art.No. 06038000	60 l	




## 664 Dry+

» For nearly all «

Silicone-free high-performance dryer with high-quality gloss additives and care components. Causes the water film to break up quickly and produces an outstanding water-repellent effect with an unprecedented deep shine.

- Also for high conveyor speeds
- Optimally biodegradable
- WITHOUT hydrocarbon and silicone

Art.No. 06645000	5 l	
Art.No. 06646000	10 l	
Art.No. 06647050	25 l	
Art.No. 06648000	60 l	



## 674 DryStar

» For the highest demands «

Innovative high-tech drying agent with very good preservation performance. Causes the water film to break up quickly, produces a unique water run-off and a microbead-free drying result.

- Leads to improved visibility in the rain (no smearing effects)
- Polyfunctional reactive components firmly bond to the surface as a network
- Very economical in consumption

Art.No. 06746000	10 l	
Art.No. 06747050	25 l	
Art.No. 06748000	60 l	



# PRESERVATION

**SONAX®**  
MADE IN GERMANY

PROTECTIVE

MAINTAINING

BRILLIANT

Depending on the facility's equipment, the wax can be applied with hot or cold water, or with the addition of air. Independent of the type of application, SONAX products offer optimum paintwork preservation and provide long-lasting all-round protection with a water-repellent effect! Waxing agents are also used for preservation in underbody cleaning.

Please note: All products shown here are VDA compliant.



## 601 Wax

» The good one with scent «

All-purpose paint preservation with gloss-producing properties. The pleasant wax scent assures customers that they are doing something good for their vehicle.

- Provides long-lasting preservation
- Produces quick water beading
- Also suitable for underbody preservation
- WITHOUT hydrocarbon

Art.No.	06015000	5 l
Art.No.	06016000	10 l
Art.No.	06017050	25 l
Art.No.	06018000	60 l
Art.No.	06019000	200 l



## 663 MultiWax

» The universal one «

Multifunctional preservative concentrate for maintenance and protection. High-quality micro-waxes protect against adverse environmental influences and UV rays.

- Can be used in hot, cold and foaming processes
- Produces an incredible gloss effect
- With a pleasant fresh fragrance

Art.No.	06635000	5 l
Art.No.	06636000	10 l
Art.No.	06637050	25 l



## 630

### Protect + Shine

» The glossy formula «

Preserving high-gloss formula with self-crosslinking protective film, which spreads quickly and completely and creates a surface smooth like a mirror. Provides long-lasting protection against UV rays, insects and other harmful environmental influences.

- Top finish for brilliant deep shine with pleasant wax scent
- Also suitable for foam application
- WITHOUT hydrocarbon and mineral oil

Art.No.	06305000	5 l
Art.No.	06306000	10 l
Art.No.	06307050	25 l



## 673

### WaxStar

» The one with long-term protection «

Innovative premium gloss wax for long-lasting protection and extreme high gloss. For an extremely durable hydrophobic effect and a long-term easy-to-clean effect.

- With polyfunctional reactive components and the highest quality care components
- No smear effects in the rain for more safety on the road
- With pleasant wax scent
- WITHOUT hydrocarbon and mineral oil

Art.No.	06736000	10 l
Art.No.	06737050	25 l
Art.No.	06738000	60 l



# SPECIAL COATING

**SONAX®**  
MADE IN GERMANY

INNOVATIVE

HIGHLY GLOSSY

LONG-LASTING

Premium programmes with foam polish convince the car wash customer in the long term! Systems with polishing cycles turn the car wash into a wellbeing experience for the paintwork. Innovative washing materials massage the agents into the paintwork surface and close the pores, creating long-lasting protection against harmful environmental influences. The perfect shine and the invisible protective film please the customer and boost the car wash business.

Please note: All products shown here are VDA compliant.



## 668

### Molecular

» The innovative high-gloss polish «

Crosslinking, extremely dense and durable protective coating on the surface. Protects against aggressive environmental influences, produces a rich, long-lasting gloss without streaks or stains.

- With „repair function“ and „easy-to-clean effect“
- No layer build-up, no smearing
- WITHOUT hydrocarbon and mineral oil

Art.No. 06685000	5 l
Art.No. 06686000	10 l
Art.No. 06687050	25 l



## 677

### Hypercoat – High Gloss Protection – EVOLUTION –

» Unique gloss protection formula «

Innovative spray sealant without cations. Creates an extreme shine with an incredibly long-lasting water-repellent effect. The sealant protects for weeks and creates a unique rain shield.

- Minimum product consumption with maximum performance
- Unprecedented deep shine
- Long-lasting water-repellent effect with impressive beading

Art.No. 06776000	10 l
Art.No. 06777050	25 l
Art.No. 06779000	200 l



## 675

### FoamCare – Polish + Shine

» Specialist for foam polish systems «

Foaming premium preservative for foam polish systems such as foam wax applications, wax walls in car washes as well as self-service foam polishes. Extra-long dwell time and excellent preservation. The surfactants contained support the cleaning effect and, at the same time, improve drying. For an impressive, long-lasting deep shine and water-repellent effect.

- Prolongs the paintwork's life, and thus maintains the vehicle's value
- Suitable for convertible tops
- Can be applied manually and mechanically
- With a pleasant fruity fragrance

Art.No. 06757050	25 l
------------------	------



# WATER TREATMENT

**SONAX®**  
MADE IN GERMANY

RESOURCE SAVING

PREVENTIVE

UNIVERSAL

The ever increasing costs for fresh water and wastewater as well as stricter environmental legislation make a properly functioning water recycling system indispensable. The SONAX range supports both biological and chemical water improvement in circulation water for automated vehicle washing.



## 550 Flocculant Special F1

Polymeric solution for the treatment of wastewater by flocculation. Especially for systems with short settling time.

- Forms small flakes for compact sedimentation
- Ideal for systems with small basin volumes
- Polyaluminium chloride hydroxide sulphate

Art.No. 05507050 25 l

pH 3



## 551 Flocculant

Polymeric solution for the treatment of industrial and wastewater in wastewater recovery systems by flocculation. Foreign matter in the water is bound in the process.

- Quickly forms a large flake
- Effective even at low temperatures
- Polyaluminium hydroxide chloride

Art.No. 05517000 25 l

pH 1



## 609 Caustic Solution 25 %

Special product based on sodium hydroxide to regulate (increase) the pH value in industrial water systems and wastewater treatment facilities.

- Regulates the pH value in chemical systems
- Also for neutralising the water after acidic cleaning work

Art.No. 06097050 25 l

pH 14



## 621 Hydrogen Peroxide Solution 7.9 %

Biodegradable decontaminant for the disinfection of car wash water as well as for the chemical biological treatment of the circulating water.

- Eliminates odour problems
- Has a preventive effect when added continuously

Art.No. 06217000 25 l

pH 2,5



## AGAINST CLOUDY, DIRTY WASH WATER AND BAD ODOURS

## 666 Active Depot SYMBIOTIK

Special additive to improve the quality of service water. Ensures an optimal balance between biology and detergent/care product. Lastingly reduces odour formation, reduces system contamination caused by service water.

- Creates a biological balance and reduces the formation of odours
- Reduces discolouration of the industrial water and thus keeps the system clean
- For a more pleasant working environment

Art.No. 06665000 5 l

pH 6



# HALL AND FACILITY CLEANING

**SONAX®**  
MADE IN GERMANY

GENTLE

EFFECTIVE

FAST

For every degree of soiling and every area of application, the comprehensive SONAX range offers the perfect agent for cleaning and maintaining your facility and hall. Limescale deposits and oily dirt can be easily removed from tiles, gates, windows, floors and machines as well as from the service stations and petrol pumps.

## 513 Acid Power Cleaner

Acidic power cleaner for the thorough removal of typical lime deposits. Cleans hall floors, tiles as well as aluminium and plastic parts.

- Also applicable as acidic shampoo and for the removal of rust bloom
- WITHOUT sulphuric acid, hydrofluoric acid and bifluoride
- Meets the requirements of leading car wash manufacturers

Art.No. 05136000 10 l

Art.No. 05137050 25 l

Art.No. 05138000 60 l



## 654 ConservEx — Wax and Seal Remover

Wax and preservation solvent for the removal of typical residues on washing aggregates and floors. Even dissolves intensively adhering wax and preservation residues in the preservation area of car washes.

- Also reliably removes limescale and other inorganic soiling
- Extra strong cleaning power
- WITHOUT hydrofluoric acid

Art.No. 06546000 10 l



## 604 Special Cleaner

Cleaner based on phosphoric acid for all acid-resistant surfaces such as stainless-steel aggregates, plastic cladding and wash materials. Removes typical lime deposits, rust bloom and other anorganic dirt.

- Very good material compatibility
- WITHOUT sulphuric acid, hydrofluoric acid and bifluoride

Art.No. 06046000 10 l

Art.No. 06047050 25 l



## 614 Workshop + Tile Cleaner

Strong acidic special cleaner for all acid-resistant surfaces such as wash hall tiles and glass surfaces. Removes typical lime deposits, rust bloom and other anorganic dirt, also from tarps and separation walls.

- Fast releasing and easy to separate
- WITHOUT sulphuric acid, hydrofluoric acid and bifluoride

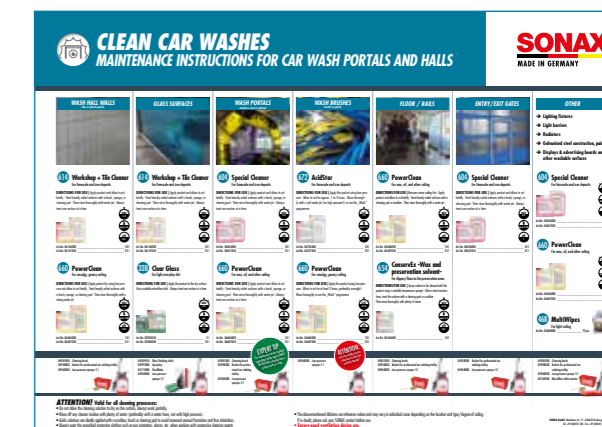
Art.No. 06146000 10 l

Art.No. 06147050 25 l



ANYONE SELLING CLEANLINESS WILL HAVE TO PRESENT THEMSELVES AS CLEAN!

To facilitate routine work, we offer smart tools and cleaning plans:



# ACCESSORIES

**SONAX®**  
MADE IN GERMANY

REASONABLE

PRACTICAL

CLEVER

The little helpers with a big effect! Maximum cleaning and care results require not only first-class products, but also professional accessories specially adapted to the respective application.



## 352 Dosing Unit

Flow metering device for mixing cleaner concentrates with water.



Art.No. 03528980 PU 1

## 354 PPE Accessories

Eye wash bottle  
Gloves  
Eye protection



Art.No. 03543980 PU 1

Art.No. 03541980 PU 1

Art.No. 03542980 PU 1

## 357 Opening Aid

for 5-l, 10-l, 25-l and 60-l containers

Art.No. 03572980 PU 1



## 418 Glass + Window Wipe

Saturated cleaning wipe for a clear, streak-free view from inside and outside. Removes wax and insect residues.

German wording.



Art.No. 04181000 PU 500

## 450 Windscreen Wiper Sleeves

Useful protection for the windscreen wipers and their arm in the car wash.

Art.No. 04505000 PU 4000 **SONAX CAR WASH**

## 496 Low-Pressure Sprayer 5 l

Robust pressure sprayer for processing aqueous cleaning products. The extra-large diameter ensures a safe stand, the extra-long spray lance simplifies the work.



Art.No. 04960000 PU 1

## 497 Top for Plastic Drum + Spout

For the clean, safe and economical dispensing from 10-litre, 25-litre plastic canisters and 60-litre plastic drums without them shrinking.



Art.No. 04973000 PU 1

Art.No. 04972000 PU 1

## 498 Measuring Cup 1 l

For safe dosing and decanting of cleaning concentrates etc.



Art.No. 04982000 PU 1

## 468 Multi Wipes

Extremely tear-resistant and durable viscose fleece cloths for thorough cleaning of machines and tools. Dries quickly, leaving no residue.

- Removes oily, greasy grime
- Cleans petrol pumps and other smooth surfaces
- Dissolves adhesive, tar, ink, wax and fresh paint
- Suitable for gentle hand cleansing thanks to vitamin E and aloe vera



Art.No. 04680000 72 pcs

# PROMOTIONAL MATERIAL



**SONAX®**  
MADE IN GERMANY

EYE-CATCHING

MEMORABLE

ATTRACTIVE

The SONAX wash becomes a washing experience. Promote the brand-name wash at your station and convince customers—from the first contact and convince customers—from the first contact to the perfect wash result. SONAX's eye-catching sales aids with high awareness potential help you do so.

## Car Wash Price Display

All car wash programmes at a glance. Individual design possible (programme name, programme sequences and prices).



## Car Wash Strap

For fences or other visible places. Strong colours and catchy design. Not to be overlooked; on a weatherproof textile banner.

German wording.

Art.No. 03745980 200 x 120 cm



Promotional measures available as editable files on the Media Cloud.

## Car Wash Flag

The eye-catching design attracts attention from a distance.

Art.No. 03583980



## Car Wash Easy Flag and Accessories

The ideal eye-catcher for the entrance area of car washes. Very stable construction, high lightfastness. Can be fixed with a stand or ground peg. Stable 15 kg stand and rotating pin with fastener. Solid earth peg for fixing to the ground in green areas.

Art.No. 03609980 Easy Flag  
Art.No. 03610980 Stand medium  
Art.No. 03608980 Earth Peg





# HIGH-YIELD CAR WASH BUSINESS ADDED VALUE THANKS TO...

## ...TOP GIVE-AWAYS

Car wash campaigns with SONAX products as an add-on offer real added value. Both for you as a car wash operator and for your customers. The high-quality car care articles in promotional sizes have a positive effect on customer loyalty and car wash turnover.



## SONAX INTERNATIONAL

Albania · Angola · Argentina · Armenia · Australia · Austria · Azerbaijan · Bahrain · Bangladesh  
Belarus · Belgium · Bosnia and Herzegovina · Brazil · Brunei · Bulgaria · Cambodia · Canada  
Chile · China · Colombia · Costa Rica · Croatia · Cyprus · Czech Republic · Denmark  
Ecuador · Egypt · Estonia · Finland · France · Georgia · Germany · Greece · Guatemala  
Hong Kong SAR China · Hungary · Iceland · India · Indonesia · Iran · Iraq · Ireland · Israel  
Italy · Japan · Jordan · Kazakhstan · Kuwait · Kyrgyzstan · Laos · Latvia · Lebanon · Lithuania  
Luxembourg · Macau SAR China · Malaysia · Malta · Mexico · Montenegro · Mozambique  
Myanmar · Netherlands · New Zealand · Nicaragua · North Macedonia · Norway · Oman  
Pakistan · Panama · Peru · Philippines · Poland · Portugal · Qatar · Réunion · Romania · Russia  
Saudi Arabia · Serbia · Singapore · Slovakia · Slovenia · South Africa · South Korea · Spain  
Sri Lanka · Sweden · Switzerland · Syria · Taiwan · Thailand · Trinidad and Tobago · Tunisia  
Turkey · Ukraine · United Arab Emirates · United Kingdom · United States · Uruguay  
Venezuela · Vietnam